

KCM-2460W

24" 4K UHD LCD Monitor

4K and Quad split monitor,each split window supports multiple input formats.

KCM-2460W,24inch 4K monitor,true 10Bit IPS LCD panel,with 3840x2160 ultra HD resolution.Supporting various professional broadcasting features such as waveform, vectorscope,false color etc.Built-in 4x3G/HD-SDI inputs and 4 outputs,4 split windows support multiple input formats makes KCM-2460W an ideal monitor for color grading and real-time quality control in 4K production workflow.



Highlights

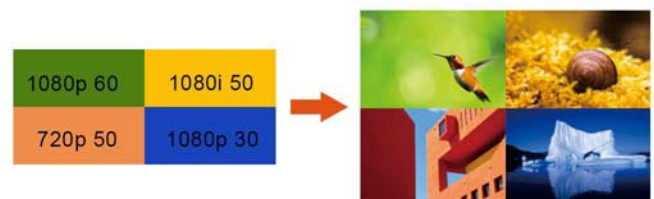
- 3840 x 2160 UHD resolution,10Bit IPS LCD panel
- 12Bit video processing
- 3D LUT color calibrated
- Compatible with Lightspace and Calman
- Multiple color gamut:
REC709/EBU/SMPTE-C/DCI-P3/USER
- 4x3G/HD-SDI inputs, 4x3G/HD-SDI outputs
- 4xDVI-D inputs and 4 outputs
- 4K mode,Quad slip mode,FHD single picture mode
- Waveform,Vectorscope
- Picture Flip,Focus Assist
- False Color,Zebra
- Scan,Markers,Blue Only/Mono
- Audio Meter
- Dynamic UMD,TSL 3.1/4.0
- Built-in DC in and AC in
- Ethernet/GPI
- RS422 in/out

Support two 4K formats

Two formats used to transfer 4K via quad link signals, Division Quad Split and Two Sample Interleave,support both formats makes Konvision monitor the top level.

Quad Split Multiple Input Formats

One UHD signal can be transformed into four FHD signals each split window supports multiple input format.



3D LUT Color Calibration

Integrated 3D LUT color calibration technology,Konvision 4K monitors are compatible with Lightspace and Calman. Support various color gamuts such as REC709 (Gamma2.4) / DCI-P3/SMPTE-C/EBU/USER),user can import their own lut files into the monitor.Lightspace and Calman for Konvision are competible with popular colorimeters including the X-rite i1 Display,C6,CR100,and Kleink10A.



KCM-2460W

24" 4K UHD LCD Monitor

Konvision

Specifications

LCD		
Display Size	23.8"	
Resolution	Full HD 3840x2160	
Aspect Ratio	16:9	
Viewing Angle	178°(H) / 178°(V)	
Pixel Pitch	0.13725x0.13725(mm)	
Color Depth	1.07B	
Back Light	LED	
Brightness	300cd/m2	
Contrast Ratio	1000:1	
INPUT		
4 × BNC	3G/HD/SD-SDI	
4 × DVI	HDMI/DVI	
OUTPUT		
4 × BNC	3G/HD/SD-SDI	
COMPATIBLE SDI FORMATS		
SMPTE ST 2036-1:2009	3840x2160(60p/59.94/50/30/29.97/25/24/23.98)	
SMPTE ST 2081	3840x2160(30/25/24p)	
SMPTE ST 2082	3840x2160(60/50/30/25/24p)	
SMPTE-425M-A/B	4:2:2 YCbCr 10-bit	1080P(60/59.94/50)
	4:4:4 YCbCr/RGB 10-bit	1080i(60/59.94/50)
	4:4:4 YCbCr/RGB 12-bit	1080p(30/29.97/25/24/23.98/30sF/29.97sF/25sF/24sF/23.98sF)
	4:2:2 YCbCr 12-bit	1080i(60/59.94/50)
	4:4:4 YCbCr/RGB 10-bit	1080p(30/29.97/25/24/23.98/30sF/29.97sF/25sF/24sF/23.98sF)
SMPTE-274M	1080i(60/59.94/50)	
SMPTE-296M	1080P(30/29.97/24/25/23.9830sF/29.97sF/25sF/24sF/23.98sF)	
SMPTE-296M	720P(60/59.94/50/30/29.97/25/24/23.98)	
SMPTE-260M	1035i(60/59.94)	
SMPTE-125M	480i(59.94)	
ITU-R BT.656	576i(50)	
Audio In / Out		
SDI Audio In	64CH audio disembedded/Display any 4 channels	
Audio Meter Display	Vertical/Horizontal Audio Level Meter Display	
Audio Headset Output	3.5mm Headset Jack	
Built-in Speaker	2.5Wx2	
GENERAL		
Operating Temperature	-10°~ 50°	
Input Voltage	DC 12V/AC:100-240V 50/60Hz	
Power Consumption	55W	
Power-Saving Mode	Turn off unimportant key Automatically if no signal input	
Unit/Packing Dimension	568.62x360.0x55mm/710x212x545cm	
Net/Gross Weight	7.95KG/8.5KG	
VESA Installation	ESA MIS-D(100X100mm)	
Shell Materials	Aluminum on Front-Shell Rust-Proof iron on Back-Shell	
Accessory	Power Cord /Desktop stand	

Specifications may be changed without prior notice.

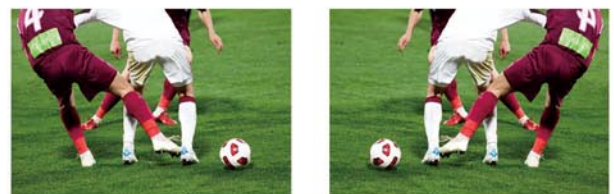
Main Functions



12Bit video processing



Waveform/Vectorscope



Picture Flip



Focus Assist



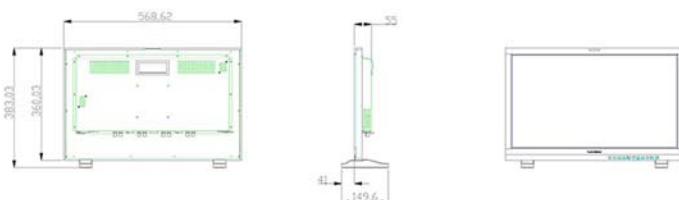
Zebra



False Color

Model Dimensions

Main body : 568.62x360.0x55mm
 W/ Stand : 568.62x383.03x149.6mm
 Power : AC 100-240V 50/60Hz, DC 12V



SHENZHEN KONVISION TECHNOLOGY CO.,LTD
 Add: 5/F, Block 1, Zong He Building, Liuxian 1st Road,
 71 Zone, Bao'an District, Shenzhen, China. 518133
 Tel: +86-755-82716021, 82924800 Fax: +86-755-61640952
 Email: sales@konvision.com
 Web: www.konvision.com