

## KCM-3160W

### 31" 4K Monitor

**4K and Quad split monitor, transform one UHD into four FHD each split window supports multiple input formats.**

KCM-3160W, 31inch 4K monitor, true 10Bit IPS LCD panel, with 4096x2160 ultra HD resolution. Supporting various professional broadcasting features such as waveform, vectorscope, false color etc. Built-in 4x3G/HD-SDI inputs and 4 outputs, 4 split windows support multiple input formats makes KCM-3160W an ideal monitor for color grading and real-time quality control in 4K production workflow.



## Highlights

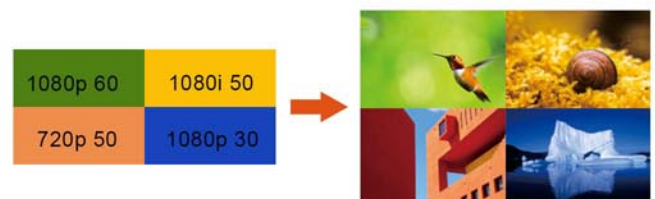
- 4096x2160 resolution, 10Bit IPS LCD panel
- 12Bit video processing
- 3D LUT color calibrated
- Compatible with Lightspace and Calman
- Multiple color gamut:  
REC709/EBU/SMPTE-C/DCI-P3/USER
- 4x3G/HD-SDI inputs, 4x3G/HD-SDI outputs
- 4xDVI-D inputs and 4 outputs
- 4K mode, Quad split mode, FHD single picture mode
- Waveform, Vectorscope
- Picture Flip, Focus Assist
- False Color, Zebra
- Scan, Markers, Blue Only/Mono
- Audio Meter
- Dynamic UMD, TSL 3.1/4.0
- Built-in DC in and AC in
- Ethernet/GPI
- RS422 in/out

### Support two 4K formats

Two formats used to transport 4K via quad link signals, Division Quad Split and Two Sample Interleave, support both formats makes Konvision monitor the top level.

### Quad Split Multiple Input Formats

Quad split which transforms one UHD into four FHD, each split window supports multiple input format.



### 3D LUT Color Calibration

Integrated 3D LUT color calibration technology, Konvision 4K monitors are compatible with Lightspace and Calman. Support various color gamuts such as REC709 (Gamma2.4) / DCI-P3/SMPTE-C/EBU/USER, user can import their own lut files into the monitor. Lightspace and Calman for Konvision are compatible with popular colorimeters including the X-rite i1 Display, C6, CR100, and KleinK10A.



# KCM-3160W

31" 4K LCD Monitor

# Konvision

## Specifications

LCD		
Display Size	31"	
Resolution	4096x2160	
Aspect Ratio	17:9	
Viewing Angle	178°(H) / 178°(V)	
Pixel Pitch	0.0567x0.1701(mm)	
Color Depth	1.07B	
Back Light	LED	
Brightness	300cd/m2	
Contrast Ratio	1000:1	
INPUT		
4 × BNC	3G/HD/SD-SDI	
4 × DVI	HDMI/DVI	
OUTPUT		
4 × BNC	3G/HD/SD-SDI	
COMPATIBLE SDI FORMATS		
SMPTE ST 2036-1:2009	3840x2160(60p/59.94/50/30/29.97/25/24/23.98)	
SMPTE ST 2081	3840x2160(30/25/24p)	
SMPTE ST 2082	3840x2160(60/50/30/25/24p)	
SMPTE-425M-A/B	4:2:2 YCbCr 10-bit	1080P(60/59.94/50)
	4:4:4 YCbCr/RGB 10-bit	1080i(60/59.94/50)
	4:4:4 YCbCr/RGB 12-bit	1080p(30/29.97/25/24/23.98/30sF/29.97sF/25sF/24sF/23.98sF)
	4:2:2 YCbCr 12-bit	1080i(60/59.94/50)
SMPTE-274M	4:4:4 YCbCr/RGB 10-bit	1080p(30/29.97/25/24/23.98/30sF/29.97sF/25sF/24sF/23.98sF)
	1080i(60/59.94/50)	1080P(30/29.97/24/25/23.9830sF/29.97sF/25sF/24sF/23.98sF)
SMPTE-296M	720P(60/59.94/50/30/29.97/25/24/23.98)	
SMPTE-260M	1035i(60/59.94)	
SMPTE-125M	480i(59.94)	
ITU-R BT.656	576i(50)	
Audio In / Out		
SDI Audio In	64CH audio disembedded/Display any 4 channels	
Audio Meter Display	Vertical/Horizontal Audio Level Meter Display	
Audio Headset Output	3.5mm Headset Jack	
Built-in Speaker	2.5Wx2	
GENERAL		
Operating Temperature	-10°~ 50°	
Input Voltage	AC: 100-240V 50/60Hz	
Power Consumption	95W	
VESA Installation	ESA MIS-D(200X200mm)	
Shell Materials	Aluminum on Front-Shell Rust-Proof iron on Back-Shell	
Accessory	Power Cord /Desktop stand	

※Specifications may be changed without prior notice.

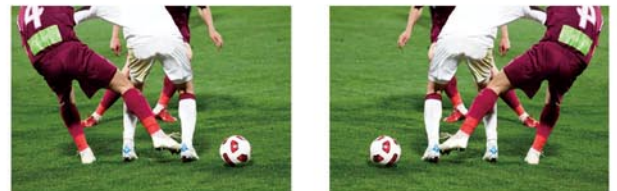
## Main Functions



12Bit video processing



Waveform/Vectorscope



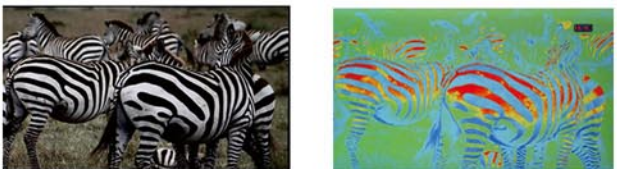
Picture Flip



Focus Assist



Zebra



False Color

SHENZHEN KONVISION TECHNOLOGY CO.,LTD

Add: 5/F, Block 1, Zong He Building, Liuxian 1st Road,  
71 Zone, Bao'an District, Shenzhen, China. 518133

Tel: +86-755-82716021, 82924800 Fax: +86-755-61640952

Email: sales@konvision.com

Web: www.konvision.com