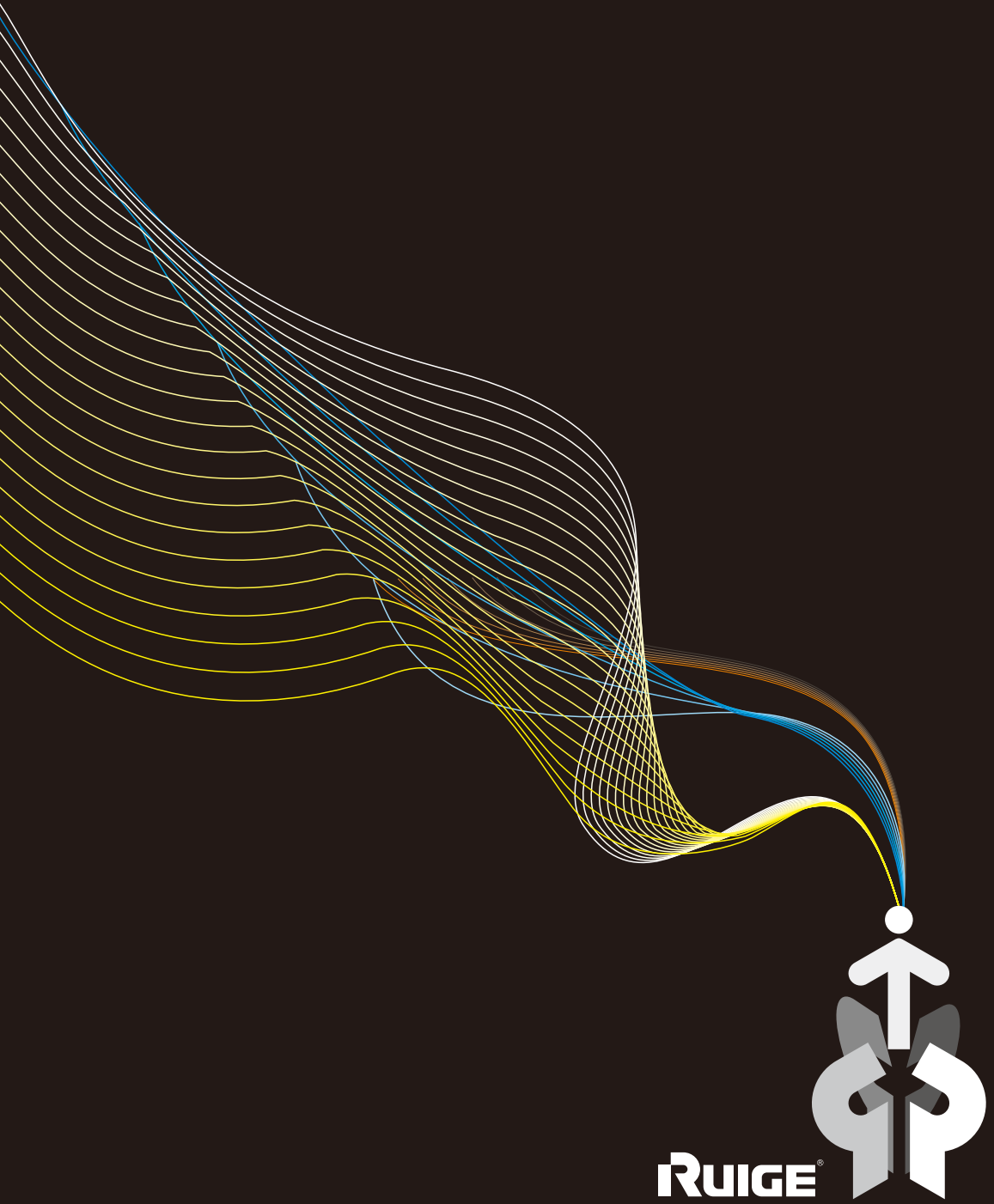


RUIGE



Apply to HD/SLR/HDV shooting

Business level HD monitor



RUIGE

Design for improve the application way of professional monitors

RUIGE LCD Monitors, Be More Professional!

TL-S480HD/TL-S500HD/TL-S701HD series



Business level HD monitor
Apply to HD/SLR/HDV shooting



TL-S480HD/TL S500HD TL-S701HD series

FC CE RoHS
Certificate



Convertible Sunhood (Standard)

Ruige patent design. It can reduce the highlight interference during outdoor shooting, and protect the LCD screen when folded.
Patent number: ZL200830141225.4



Original imported A+ grade LCD panel

High brightness, high resolution, high contrast, ensures clear and sharp picture quality.



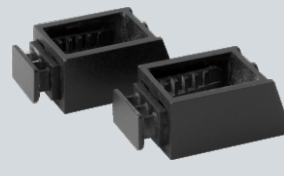
Super thin housing design

Thickness 29-30.5mm, more portable



Rubber Protective Cover (Optional)

Unique innovation design, environmental rubber protective cover to protect the monitor avoid dropping and any impacting trouble



HDMI Plug Lock (Optional)

It is innovatively designed from alligator clip. It can lock different types of HDMI plug, and solve HDMI plug dropping problem when doing the dolly shot and frequent monitor viewing angle adjustment.
Patent application number 201120010975.4



Linear Zoom Trigger (Optional)

It can zoom in image in 1:1 pixel for monitoring. Pressing ZOOM key first time enters 1:1 pixel zoom in, second press enters peak focus status, third press returns normal size and status. This makes focus easier and faster, which solved off-focus problem in HD video shooting.
Patent application number: 201120010973.5



Ruige business level HD monitors are Luoyang Movie-TV Optic-electronic Technology Co., Ltd specially designed portable monitors for HD/SLR and HDV video shooting. It has many competitive features like portable, practical, wide viewing angle, high resolution, high brightness, high contrast, low power consumption and so on, which widely applied for Canon, Sony, Nikon, etc HD/SLR cameras, and Sony, Panasonic, JVC, etc HD video cameras. It enables HD films equipment more lightweight and video clips making low cost.

- Central zoom in assist fast focus**
 It adopt pixel restore technology, and zoom in the image to 1:1 pixel via linear zoom trigger, which assist the photographer monitoring the picture details and capture every wonderful moment.
- Peak focus function assists fast focus**
 By using linear zoom trigger, the object in the image could have a white edge, which makes focus easy to do. This function is especially helpful when shooting the shadows.
- Camera— for Canon EOS 5D Mark II**
 When Canon EOS 5D Mark II is in video mode, the image in standby status and recording status cannot be fully displayed on the monitor. It will downgrade the original 1080i HD (16:9) image to 480p (4:3) image. In this case, the image will be smaller. After you press CAMERA button, it can fully display any output format during the shooting process on the screen.
- Black /White (Monochrome)**
 Switch between B/W and color.
 The Usage of monochrome
 Easy for focusing, reduces color disturb
 Easy to watch the lightning effects
- Photo Flip**
 TL-S480HD/TL-S701HDseries has photo flip function. When you select this function, the image could flip 180°
- Aspect ratio switch**
 It has four aspect ratios: Auto, 16:9, 4:3, letter box
 AUTO: It automatically identifies the corresponding screen display ratio
 16:9: It is for HD signal input
 4:3: It is for the analog and SD signal.
 Letter Box: It is used when we display 4:3 image (analog and SD signal) into

16:9 screen and getting full screen. (It will show the top and low out-of-shape, this is a special function but not design defect)

- Scale**
 We have five safety markers as options: 80%,85%,90%,93%,96%,off.
- Audio monitoring:**
 This series monitor has headphone jack, which enables synching up monitoring.
- Scan Mode**
 It has three scan modes, standard, under scan, over scan
- Temperature adjust**
 It has three options: D65, D93, User define. Users can define RGB data.
- Auxiliary functions:**
 New functions like middle line, subtitle box, transform give photographers more control one the details shooting.
- LCD Panel**
 Original imported A+ grade lcd panel, high resolution, high brightness, high contrast, restore the real color of the object, and ensures clear and sharp pictures.
- Housing material**
 Housing material is ABS+PC, which is high temperature (150°)resistant, of high intensity (no damage from a 1.5m drop) and impact resistant.
- Component origins**
 The component purchased world widely to ensure the best quality. Component origins from U.S., Canada, Japan, Korea, Taiwan, etc

Technical specification

Model number	TL-S480HD / HDA	TL-S500HD	TL-S701HD / HDA
Screen size	4.8"	5"	7"
Resolution	800 ×480	800 ×480	1024 ×600
Aspect ratio	16:9/4:3 (switchable)	16:9/4:3 (switchable)	16:9/4:3 (switchable)
Brightness	500cd/m ²	350cd/m ²	250cd/m ²
Contrast	800:1	500:1	700:1
Response time	10ms	10ms	10ms
Color	16.7M	16.7M	16.7M
Viewing angle	H.160°, V.160°	H.140°, V.120°	H.150°, V.145°
Power consumption	≤7.5W	≤6.5W	≤12W
Voltage range	DC 6.5V~36V	DC 6.5V~36V	DC 6.5V~36V
Operation way	Key	Key	Key
Install way	Hot shoe adapter	Hot shoe adapter	Metal Hot shoe adapter
Outer size	(L)147.3×(H)100.8×(D)29mm	(L)147.5×(H)100.8×(D)29mm	(L)200×(H)137×(D)30.5mm
Net weight	0.4Kg	0.45Kg	0.60Kg

ACCESSORIES



Convertible Sunhood (standard accessory)



7.2V DV battery plate (optional)



HDMI Plug Lock (Optional)



Linear Zoom Trigger (optional)



AC-DC adaptor (standard accessory)



Metal Hot shoe adapter (standard accessory)



HDMI to mini HDMI cable (standard accessory)



Rubber Protective Cover (Optional)