

SafeTANK Series

GR3660-B3



8TB capacity



JBOD Mode



RAID 0,1 Mode



USB 3.0



UASP

Easy Operate, High-Speed Transmission

Support HDD Swap With UASP Design With More Efficient Transmission

GR3660-B3 is a full-featured simple and easy dual bay storage device, along with RAID 0 (Striping), RAID 1 (Mirroring), and JBOD three application modes, with Super Speed USB3.0 transmission interface, not only with fast transmission performance but also easily content data safety with 8TB large storage capacity or information exchange requirement.

GR3660-B3
Five Features

5



8TB
capacity

GR3660-B3

Provides Up To 8TB Of Large Storage Capacity For Your creations

GR3660-B3 is compatible with all brands of 8TB SATA hard drives. Install two 8TB hard drives under RAID 0 mode and the system will provide 8TB of access. Independent JBOD mode can offer independent storage areas even if the hard drives are of different capacities.

GR3660-B3

Function Switching By Oneself



RAID 0 Mode



RAID 1 Mode



JBOD Mode



GR3660-B3 has three configuration modes built-in: RAID 1 (Safe Mode), RAID 0 (Speed Mode), and JBOD (Two Independent Volumes) for you to choose according to your needs.

RAID 0 Speed Mode

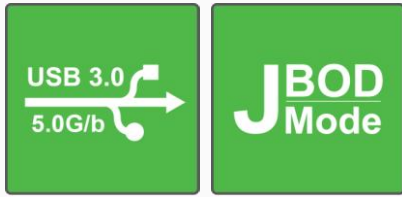
The two disks are merged into one disk, providing no data security. When saving data, the data is divided into a number of segments corresponding to the number of disks. The segments are written to the disks simultaneously, making RAID 0 the fastest of the modes.

RAID 1 Safe Mode

RAID 1 refers to mirroring. All data that is saved on the main disk is also written identically to the mirror disk. When the main disk is damaged, the mirror disk takes over the main disk. This makes RAID 1 the safest of the modes.

JBOD Independent Volume Mode

In this mode, you can install two disks that have different volumes and use them independently. There is no RAID configuration and without special safety or speed differences. You can also use this mode in apply with other RAIDON modules.



SATA III 6G

Chip Design Enjoy Extreme Speed



GR3660-B3 internal use SATA III (6G) chip design and transform into the most easy to use USB3.0 (5G) interface, backwards compatible with USB 2.0 and USB 1.1, not only comprehensive range of usage but also leaving your data transfer without waiting to complete an instant. USB 3.0 performance will slight decrease due to maximum and fragmented data transfer mainly due to the transmission technology.

In order to allow better transmission performance, GR3660-B3 add UASP function to transfer data without waiting for previous data transfer is completed before the current transmission data movement, and improved in CPU utilization, data delay and waiting .

(To reach UASP acceleration, make sure your computer is also support UASP function.)

Integral Forming **Aluminum** Enclosure Design

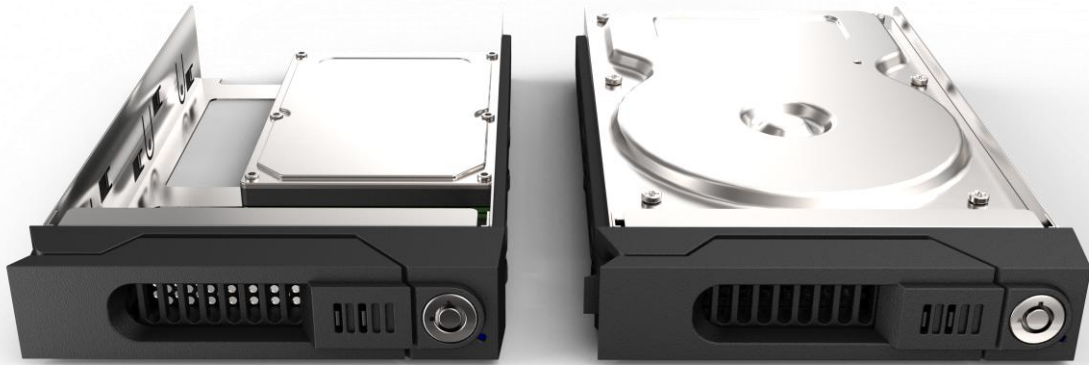
Protect Your Precious Data

Designed with sturdy, solid aluminum, the GR3660-B3 can withstand greater impact than the average product with aluminum casing, shielding your hard drive from the impact of various usage conditions. The compact aluminum casing is fitted with a large, low-noise fan to keep your hard drive from failing and eliminate the internal heat of the RAID system.



GR3660-B3 A High-Speed Storage System

For An Extensive Range Of Applications



Currently SSD performance beyond traditional hard disk, remarkable performance reads data is replace the traditional hard disk as a boot device.

However, when you have 3.5-inch HDD, 2.5-inch HDD or SSD each replacing required to remove enclosure which is a high burden work. Now just through GR3660 can help you achieve both SSD to be a system disk and hard disk swap data store, can be installed through the hot-swap design; removable hard drive tray design, combined with external box convenience the plug and play and stability advantages of a built-in tray, allowing you to easily swap on the move.



With Removable Drive Trays In A Various Application Range

The unique design of SATA hard drives gives itself removable characteristics; but through RAIDON's removable trays, removing and installing SATA hard drives is more comprehensive and secure. Through secure removable hard drive trays, users can easily move the entire hard drive like moving an entire video library. Users no longer need to rummage through a stack of CDs/DVDs to look for a video. Let the removable tray design make your workflow faster and more convenient. RAIDON has already envisioned these application advantages for users.

Never Worry Exhaustion Of Hard Disk

As your Lightroom library grows, it may become too big to store on your computer's hard drive. Adobe Bridge lets you set up as many external drives as you want and specify where to store each of your photos — without changing anything in your Adobe Bridge library. You can access and edit your photos the way you usually do, no matter where the originals are stored. This feature also allows you to add hard drives one at a time, whenever you need them. So your setup can grow along with your library.



High Efficiency Cooling Fan

One of the most overlooked aspects of external storage devices is maintaining a cool operating temperature inside the unit. The GR3660 features a smart fan in combination design, and front ventilation grill that help with heat dissipation. If the GR3660 will be used for long periods of time, the device will be kept at the right temperature.



LED Display Status

It seems simple, but the GR3660 LED status lights give users an instant status indication for each of the HDDs, it flash when it is in use, however, many RAID devices on the market only featuring a power light unable to provide user the cause of factor once HDD failed.



GR3660-B3 Data sheet

Front View

Rear View

Feature

- Support UASP
- Support USB 3.0 Interface
- RAID 0, 1 & JBOD
- RAID switch
- Support Removable Drive Tray
- Rebuilding



| | |
|---------------------|--|
| Mode No. | GR3660-B3 |
| RAID chip | JMS561 |
| Host Interface | USB3.0 UASP |
| RAID Level | RAID 0, 1 & JBOD |
| Support Hard Disk | 2 x SATA III SSD/HDD (6.0 Gb/s) |
| Single HDD Capacity | Single HDD tested up to 8TB |
| Rebuilding | Yes |
| LED Indicators | Power / HDD Access / HDD Failed / Rebuilding / Connection Status |
| Fan | 1 x 4cm Fan |
| Power Supply | 12V / 4A Adaptor |
| Operating System | Windows, Mac & Linux |
| Certification | CE & FCC |
| Packing Content | Power Adaptor / USB 3.0 Cable / Quick Installation Guide / Accessory Kit |
| Dimension | 105(W) x 174(L) x 33.5(H) mm |
| Net Weight | 0.83kg |

| Product and Packaging Information | | | |
|-----------------------------------|-------------------------------|-------------------------------|---------------|
| Net Dimension | 120 (W) x 64 (L) x 200 (H) mm | Net Weight | 0.83Kg |
| Single Package Size: | 245mm X 127mm X 160mm | Net Weight(including Packing) | 1.12Kg |
| Carton Size | 660mmX270mmX356mm | Gross Weight | 12.2Kg/Carton |
| Carton Quantity | 10 units / carton | Country of Original | Taiwan |
| EAN-No.: | 4711132864786 | | |
| UPC-No.: | 884826503996 | | |

Actual product specification is base on delivery, subject to be changed without further notice.