

# MODEL NO. : LM-1511T

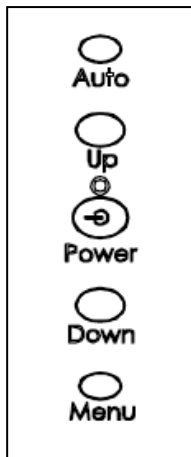
## SPECIFICATION

◆ DISPLAY SCREEN	15" TFT (Diagonal) Active Display Area 304.128(W) x 228.096 mm(H) Element Color TFT LCD Resolution 1024 x 768 maximum LCD Display Color 16.2M colors Pixel Pitch 0.297 x 0.297 mm
◆ POWER SOURCE	AC/DC Adapter 12 V
◆ OPERATING TEMPERATURE	5°C ~ 35°C
◆ STORAGE TEMPERATURE	-5°C ~ 60°C
◆ BRIGHTNESS	250 cd/m <sup>2</sup>
◆ RESPONSE TIME	8 ms (Tr+Tf)
◆ CONTRAST	700 : 1
◆ VIEWING ANGLE	Vertical ± 45° , Horizontal : ± 60°
◆ INPUT SIGNAL	Audio / Video Composite: NTSC/PAL/SECAM 1 Vp-p. 75Ω RCA x 1 S-Video socket x 1 PC RGB Analogue Input 15 Pin D-Sub x1 VESA DDC2B VESA DPMS Brightness, Contrast, Color, Volume, Mute
◆ PLUG & PLAY	
◆ GREEN FUNCTION	
◆ OSD CONTROL FUNCTION	
◆ OVERALL DIMENSION	413.0 x 305.0 x 51.0 (mm)
◆ REGULATIONS	Safety: CE, FCC meet
◆ WEIGHT	8 Kgs

## FEATURE

- ◆ 5 Wire Resistive Touch
- ◆ 15" LCD Screens
- ◆ 2 Video RCA Inputs
- ◆ 1 Audio RCA Output
- ◆ Low Power Consumption

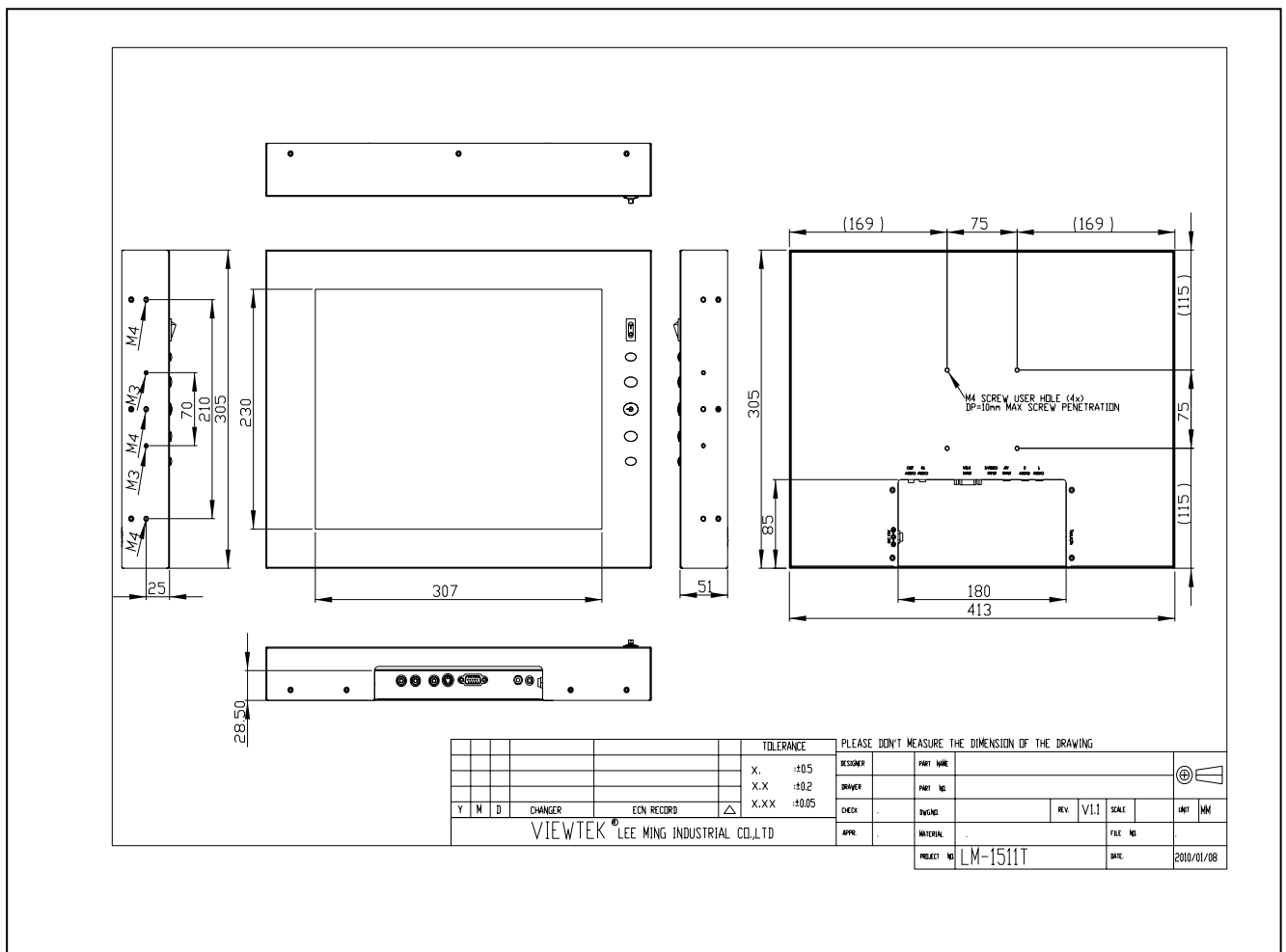
**ON SCREEN DISPLAY SETTINGS (OSD)**



- ◆ To turn on the OSD menu: Press power button.  
Press Menu button.
- ◆ When OSD menu is on .
  - Select option within icon menu: Use up or down buttons.  
Then press Menu to make select.
  - Increase/decrease setting : Use up or down buttons.
- ◆ To load the presetting (default setup) :  
Use menu button and power button. (menu +power button )

**MECHANICAL DRAWING**

◆ **MONITOR**



□ **VGA SUPPORT TABLE** □

Resolution	Horiz. Freq.(KHz)	Vert. Freq.(Hz)	Polarity
640X350	31.46	70	+/-
	37.86	85	+/-
720X350	31.46	70	+/-
	37.86	85	+/-
640X400	31.46	70	-/+
	37.93	85	-/+
	24.82	56	-/+
720X400	31.46	70	-/+
	37.86	85	-/+
640X480	31.46	59.9	-/-
	35.00	66.6	+/-
	37.86	72.8	-/-
	37.50	75.0	-/-
	43.27	85.0	-/-
800X600	35.15	56.2	+/+
	37.87	60.3	+/+
	48.07	72.2	+/+
	46.87	75.0	+/+
	44.40	70.0	+/+
	53.67	85.0	+/+
832X624	49.72	74.5	-/-
1024X768	48.36	60.0	-/-
	56.47	70.1	-/-
	58.08	72.9	
	60.02	75.0	+/+
	68.68	84.9	+/+

Record of Revision

<b>Version and Date</b>	<b>Page</b>	<b>Old Description</b>	<b>New Description</b>	<b>Remark</b>
V.1.1 ,1229-2009	4	LM-1511T New Model	LM-1511T New Model	