

MODEL NO. : LRM-6531

SPECIFICATION

◆ DISPLAY SCREEN	SCREEN SIZE	5.6 INCH
	ACTIVE AREA	112.896(W)x84.672(H)
	ELEMENT	COLOR TFT LCD
	RESOLUTION	640(W) x (RGB) x 480(H)
	DOT PITCH	0.0525(W) x 0.1575(H)

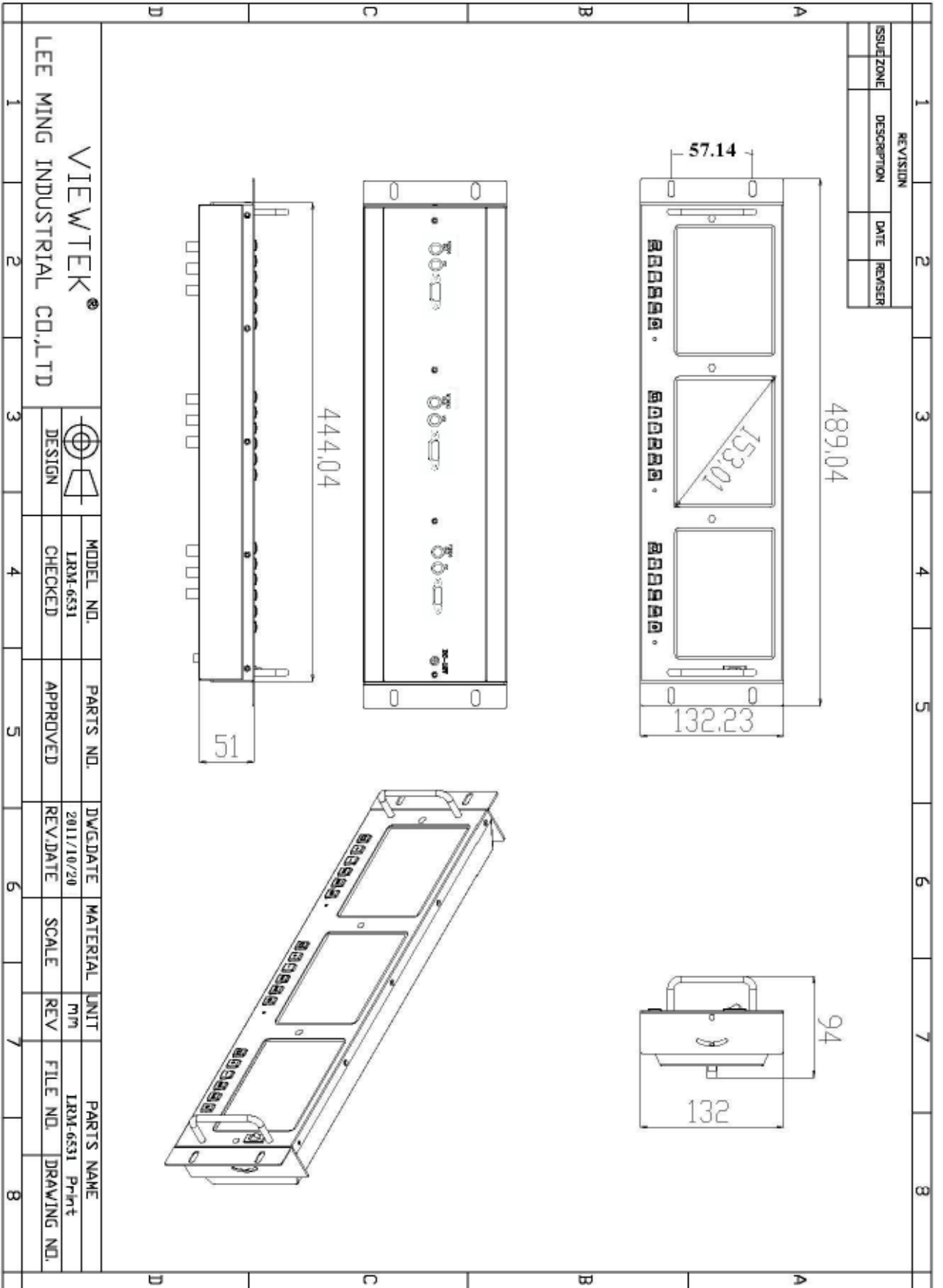
◆ VIDEO SYSTEM	NTSC or PAL System
NTSC	<i>f</i> H : 15.75 Khz
	<i>f</i> V : 60 Hz
	<i>f</i> C : 3.58 MHz
	PAL
	<i>f</i> H : 15.625 Khz
	<i>f</i> V : 50 Hz
	<i>f</i> C : 4.43 MHz

◆ POWER SOURCE	DC 12V
◆ POWER CONSUMPTION	220mA ± 20mA in 12V
◆ OPERATING TEMPERATURE	-10°C ~ 60°C
◆ STORAGE TEMPERATURE	-20°C ~ 70°C
◆ LCD SCREEN	126.5(W) x 100(H) x 5.7(D) (mm)
◆ OVERALL DIMENSION	489.04(W) x 132.23 (H) X 66.00 (D) (mm)
◆ BRIGHTNESS	200 cd/m ²
◆ VIEWING ANGLE	L/R : 70° TOP: 50° Down: 70°
◆ INPUT SIGNAL	Video Composite: NTSC/PAL/SECAM
	1 Vp-p. 75 Ω BNC x 1 Input
	1 Vp-p. 75 Ω BNC x 1 Output
	PC RGB Analogue Input 15 Pin D-Sub x1
◆ PLUG & PLAY	VESA DDC2B
◆ GREEN FUNCTION	VESA DPMS
◆ OSD CONTROL FUNCTION	Brightness, Contrast, Color, Volume, Mute
◆ WEIGHT	3500 ±10 g

FEATURES

1. 5.6" Digital LCD X 3 LCD Screens
2. 1 VIDEO BNC INPUT, 1 VIDEO BNC OUTPUT
3. 1 VGA IN INPUT
4. Low Power Consumption.

MECHANICAL DIMENSION



□ **VGA SUPPORT TABLE** □

Resolution	Horiz. Freq.(KHz)	Vert. Freq.(Hz)	Polarity
640X350	31.46	70	+/-
	37.86	85	+/-
720X350	31.46	70	+/-
	37.86	85	+/-
640X400	31.46	70	-/+
	37.93	85	-/+
	24.82	56	-/+
720X400	31.46	70	-/+
	37.86	85	-/+
640X480	31.46	59.9	-/-
	35.00	66.6	+/-
	37.86	72.8	-/-
	37.50	75.0	-/-
	43.27	85.0	-/-
800X600	35.15	56.2	+/+
	37.87	60.3	+/+
	48.07	72.2	+/+
	46.87	75.0	+/+
	44.40	70.0	+/+
	53.67	85.0	+/+
832X624	49.72	74.5	-/-
1024X768	48.36	60.0	-/-
	56.47	70.1	-/-
	58.08	72.9	
	60.02	75.0	+/+
	68.68	84.9	+/+
1152X864	54.90	60.0	
	64.19	70.2	+/+
	67.50	75.0	-/-
	76.30	80.0	
	77.09	84.9	
1280X1024	64.60	59.9	+/+
	63.98	60.0	-/-
	74.40	59.3	
	78.72	74.0	
	79.97	75.0	