



Broadcasting and Professional LED Lighting



1. Pioneer LED Technology

LEDs have become the third revolution in lighting due to their long life, energy efficiency, color–richness, safety and environmentally friendly features. LEDs use semiconductor ICs as light–emitting source, directly converting electrical energy into light.

Whether comparing life–span or cost, LEDs are now superior to many traditional sources of light. Shooting film with LEDs produces crisper pictures, making it a real alternative for professionals in the film and photography industry.

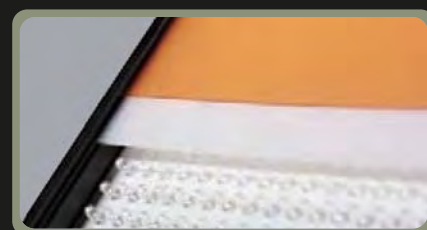
Brightcast has developed CRI RA of 95 or above, setting new standards for the television industry. Life span can reach up to 100,000 hours, with the standard at 50,000 hours.

2. Brightcast Professional Standard

Brightcast's range of broadcasting and professional lights all use the newest LED technology. Energy–saving, high efficiency, long life, no flicker, light weight and portability are standard features. It is also worth mentioning that all Brightcast products offer wireless infra–red controls. Angle, color temperature, and brightness are all adjustable in unlimited network environment. In addition, in order to facilitate the outdoor filming, all products support battery and AC–DC adapter power supplies. Excellent performance means Brightcast products are widely used in studios, theatres, news sites, workshops, conference rooms, classrooms, indoors and outdoors, and many other situations.

All Brightcast products undergo low & high temperature, shock resistance and 48 hours electrical tests, with total testing time taking more than 200 hours before they are shipped off.

Brightcast lamps have a double filter groove structure to simultaneously hold two filters, in order to meet softness, color–temperature, color and other filter requirements. Lamps also have anti–falling switches, to prevent filters from dropping when lights are inverted.



Brightcast has developed and implemented a range of patented shapes, structures and technologies, including 45° diode holders, quick-fix double-filter structure and on-camera barn-door+double-filter combo.

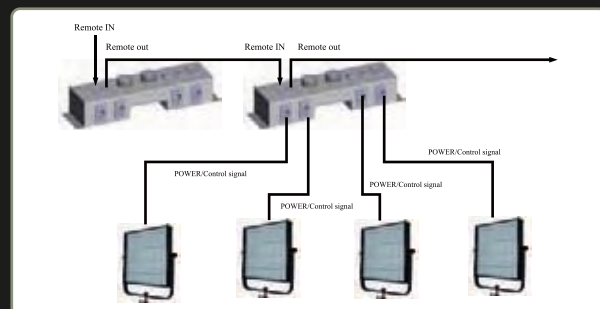
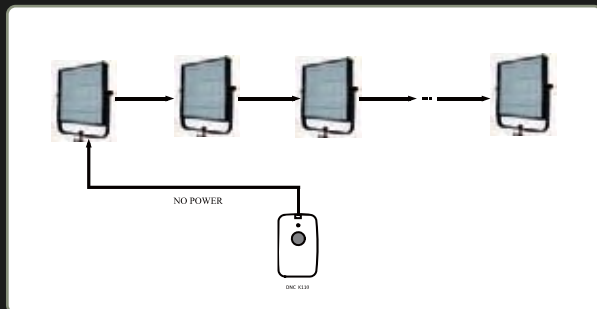
Horizontal installation of our panels is possible thanks to our upgraded 45° diode holder. We can guarantee that every diode has a 45° oblique tilt, and the pin-power protection function ensures the quality of the lighting installation.



A stable current is important for LED lights, and can effect lamp longevity. Brightcast engineers have designed constant current regulators that guarantee electrical current stability, thereby ensuring the longevity of our lamps.



Brightcast provides a comprehensive infrared remote control, making life simpler for broadcasters and photographers. 0–100% light regulation is possible for all lamps. For bi-color lamps it is possible to set color temperature, while for multi-angle products angle adjustments can be made. For the Full Color range, color can be fine tuned to any level, and 16 shortcut keys are available for standard colors. An unlimited number of lamps can be connected and simultaneously controlled.



Reporters at the IBC exhibition using Brightcast lights

16" LED Panels—Single Color

Brightcast Single Color series of high-brightness LED lights provide manual and wired controls, DMX512–1990 protocols for dimming control and unlimited connections, and double-filter design for softness, color temperature and color adjustments. B100/200 pinch option for Sony or Panasonic batteries, work 2–6 hours (depending on battery capacity and illumination level), or alternatively use AC–DC power adapter.

Lamps use metal or ABS plastic cases for easy transportation and can be easily installed in studio lighting racks. Available options include 5600K, 3200K, blue or green at 15°, 30° or 52°.

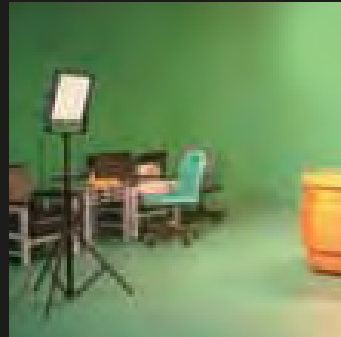
0–100% Brightness Adjustment

Smooth dial at the back of the case or using DMX controller allows for quick, flicker-free 0–100% brightness adjustment.



Professional Quality

Brightcast monochrome series consists of high-brightness LEDs, each undergoing rigorous screening tests to ensure accurate color temperature. LEDs are tested using special Brightcast brightness and CRI testing machines.



Indoor light

Lightweight, portable, and accurate CT for perfect color rendering. Widely used in studio for interviews and photo sessions, when heat radiation is best kept at a minimum.

Model Choices

Flicker free, high brightness, high CRI LEDs

RP16–32	RP16–56	RP16–GR	RP16–BL
3200K	5600K	Green	Blue
15° or 30° or 52° Beam Angle Available		15° Beam Angle Available	



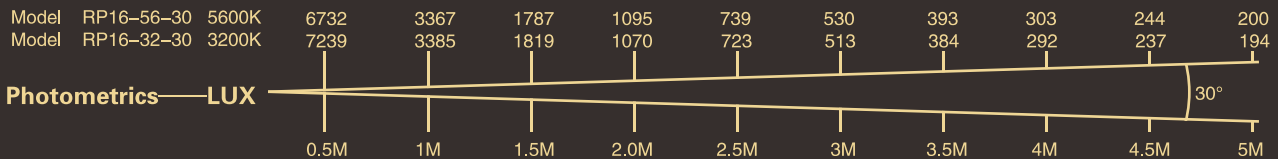
RP16



RP16– GR



RP16– BL



Features

Power Input	DC 12V 4A
Max. Power	31W
Lifespan	50,000 hours
Temperature	–40° C to +85° C
Weight	Plastic 2.03kg Metal 2.73kg
Dimensions	16" Diagonally 35.9"41.8"7.0cm

Specifications

Filter	2 Slots
IC	Advanced Current Control Regulator
Dimmer	0–100%
Network	Unlimited manual/remote
Remote	Infrared Color, Brightness, On/Off
DMX	LCD multi-situation display
Power Source	Camcorder Battery or External

16"LED Panels–Bi Color

Color temperature can be adjusted. "345" indicates that the product can be set to 3200K, 5600K or anything in between, such as 4200K. The double filter design allows photographers to use different combinations of filters to achieve a richer softness or color effect. Used with B100/200 pinch for Sony or Panasonic batteries(2–6 hours depending on battery capacity and brightness settings), or with AC–DC power adapter.

Metal or ABS plastic case available. Portable and easy to install on studio lighting racks. 15° , 30° or 52° angles available. Economic and space saving, the adjustable CT series is perfect for filming and photography requiring different CTs and in different locations.



Double–knob Design

Two dials on the back of the panel to adjust CT (3200K–5600K) and brightness (0–100%). Can also be adjusted via remote and DMX control.



LED Double–array

Two sets of perfectly aligned 5600K and 3200K LEDs, which have undergone rigorous testing to ensure accurate CT.

Model Choices

Flicker free, high brightness, high CRI LEDs

RP16–345

Tungsten (3200K) and Daylight (5600K)
15° , 30° or 52° Beam Angle

RP16–GB

Green and Blue
15° Beam Angle



RP16–345



RP16–GB



Features

Power Input	DC 12V 6.5A
Max. Power	31W
Lifespan	50,000 hours
Temperature	–40° C to +85° C
Weight	Plastic 2.38kg Metal 2.96kg
Dimensions	16" Diagonally 35.9*41.8*7.0cm

Specifications

Filter	2 Slots
IC	Advanced Current Control Regulator
Dimmer	0–100%
Network	Unlimited manual/remote
Remote	Infrared Color, Brightness, On/Off
DMX	LCD multi–situation display
Power Source	Camcorder Battery or External

16" LED Panels—Multi-Beam Angle

Brightcast Multi-Beam Angle series of television lights can meet your light and angle adjustment needs. For example, the RP16-1552 can emit light at 15° or 52° , 1530 is 15° or 30° , 3052 is 30° or 52° . Also includes double filter design for color, CT and softness adjustment. Can use B100/200 pinch for Sony or Panasonic batteries (2-6 hours depending on battery capacity and brightness settings), or AC-DC power adapter.

Metal or ABS plastic frame available. Portable and easy to install on studio lighting racks. Available in 3200K or 5600K, 15° /30° or 30° /52° or 15° /52° .



Double-knob Design

Built-in computer program controls. Two dials on the back of the panel to adjust angle and brightness (0-100%). Can also be adjusted via remote and DMX control.



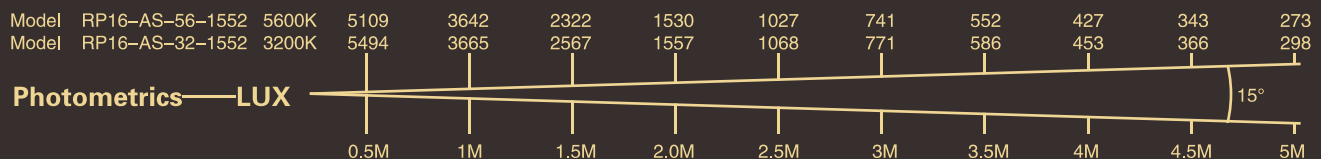
Multi-Beam Angle Design

Two sets of LEDs that allow you to adjust angle, depending on the lamp choice. 15° /30° or 30° /52° or 15° /52° angle beams available.

Model Choices Flicker free, high brightness, high CRI LEDs	RP16-AS-1552	RP16-AS-3052	RP16-AS-1530
		15° or 52° Beam Angles	30° or 52° Beam Angles
	3200K or 5600K		



RP16-AS



Features

Power Input	DC 12V 6.5A
Max. Power	31W
Lifespan	50,000 hours
Temperature	-40° C to +85° C
Weight	Plastic 2.38 kg Metal 2.96kg
Dimensions	16" Diagonally 35.9*41.8*7.0cm

Specifications

Filter	2 Slots
IC	Advanced Current Control Regulator
Dimmer	0-100%
Network	Unlimited manual/remote
Remote	Infrared
	Color, Brightness, On/Off
DMX	LCD multi-situation display
Power Source	Camcorder Battery or External

16"LED Panels–Full Color

Brightcast Full Color series solves the troubles encountered by professionals who need a range of colors. RGB color combination allows adjustments between 0–255 levels, for a total of 16 million colors. The level of brightness can also be adjusted 0–100%. Great for studios, theatre, conference halls, banquet halls, classrooms, virtual studio and almost any application. With the advent of this product, lighting specialists no longer have to worry about finding a suitable filter. A B100/200 pinch allows for Sony or Panasonic batteries (2–6 hours depending on battery capacity and brightness settings), or can be plugged into a AC–DC power adapter.



Double–knob Design

Two dials on the back of the panel to adjust color and brightness (0–100%). Can also be adjusted via remote control. Color can be adjusted between 0–255 levels each, or can use the available fast–switch buttons for standard colors.



Triple Array Design (RGB)

Three sets of high–brightness red, green, blue (RGB) LEDs. Each color can be adjusted between 0–255 levels, which can be combined to make 16 million color combinations possible. Brightness can also be adjusted.



RP16–RGB

Full Color Broadcasting Lights



- ◇ More than 16 million colors
- ◇ Flicker free, high brightness, high CRI LEDs

Features

Power Input	DC 12V 10A
Max. Power	84W
Lifespan	50,000 hours
Temperature	–40° C to +85° C
Weight	Plastic 2.03kg Metal 2.9kg
Dimensions	16" Diagonally 35.9*41.8*7.0cm

Specifications

Filter	2 Slots
IC	Advanced Current Control Regulator
Dimmer	0–100%
Network	Unlimited manual/remote
Remote	Infrared
	Color, Brightness, On/Off
DMX	LCD multi–situation display
Power Source	Camcorder Battery or External

16" LED Panels—Brightcast Butterfly

Flexible and elegant, the Brightcast Butterfly is an industry first. Adjustable in any direction thanks to its multi-axis damping system, giving it 270° vertical and 180° horizontal freedom of range.

When folded it is almost the same size as a single 16" panel, and can be easily stored with your batteries, filters and other accessories. Works with standard Sony or Panasonic batteries.

The Brightcast Butterfly is ready to fly away with you! Double the light, square the flexibility!

Model Choices

Flicker free, high brightness, high CRI LEDs

3200K or 5600K



RP16—Butterfly

Broadcasting & Professional LED Lights



Features

Power Input	DC 12V 4A
Max. Power	68W
Lifespan	50,000 hours
Temperature	-40° C to +85° C
Weight	Plastic 2.5kg
Dimensions	16" x2 Diagonally 35.9*41.8*7.0cm

Specifications

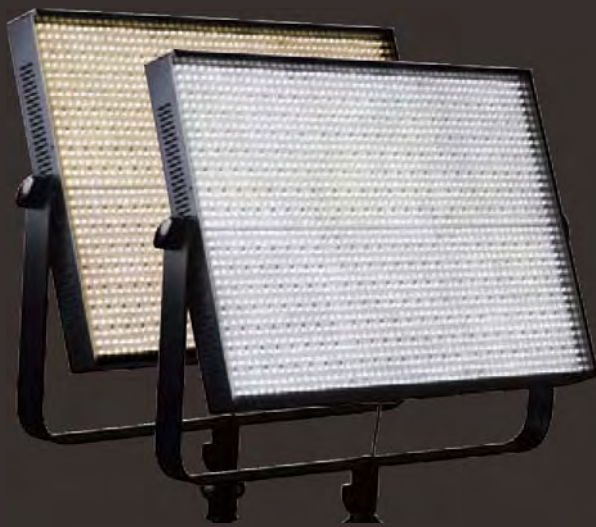
Filter	4 Slots
IC	Advanced Current Control Regulator
Dimmer	0-100%
Network	Unlimited manual/remote
Remote	Infrared Color, Brightness, On/Off
DMX	LCD multi-situation display
Power Source	Camcorder Battery or External

24" Panels—Single Color

Brightcast Single Color series of high-brightness LED lights provide manual and wired controls, DMX512–1990 protocols for dimming control and unlimited connections, and double-filter design for softness, color temperature and color adjustments. B100/200 pinch option for Sony or Panasonic batteries, work 2–6 hours (depending on battery capacity and illumination level), or alternatively use AC–DC power adapter.

Lamps use metal or ABS plastic cases for easy transportation and can be easily installed in studio lighting racks. Available options include 5600K, 3200K at 15° , 30° , 52° (standard lights) or 25° , 45° , 60° (high power lights).

Model Choices Flicker free, high brightness, high CRI LEDs	RP24–32	RP24–56	BP24–32	BP24–56
	3200K	5600K	3200K	5600K
	15° or 30° or 52° Beam Angle Available 1152 High Brightness LEDs		25° or 45° or 60° Beam Angle Available 96 Extremely High Brightness LEDs	



RP 24



BP 24

Features

Power Input	DC 12V 15A
Max. Power	RP 85W / BP 96W
Lifespan	50,000 hours
Temperature	–40° C to +85° C
Weight	RP24:4.46kg BP24:5.73kg
Dimensions	24" Diagonally 60.6*48.2*8.2cm

Specifications

Filter	2 Slots
IC	Advanced Current Control Regulator
Dimmer	0–100%
Network	Unlimited manual/remote
Remote	Infrared Color, Brightness, On/Off
DMX	LCD multi-situation display
Power Source	Camcorder Battery or External

24" LED Panels—Bi Color

Brightcast Bi-Color series of high-brightness LED lights provide manual and wired controls, DMX512-1990 protocols for dimming control and unlimited connections, and double-filter design for softness, color temperature and color adjustments. B100/200 pinch option for Sony or Panasonic batteries, work 2-6 hours (depending on battery capacity and illumination level), or alternatively use AC-DC power adapter.

Lamps use metal or ABS plastic cases for easy transportation and can be easily installed in studio lighting racks. Available options include 5600K and 3200K at 15° , 30° , 52° (standard lights) or 25° , 45° , 60° (high power lights).

Model Choices Flicker free, high brightness, high CRI LEDs	RP24-345	BP24-345
		2304 High Brightness LEDs 3200K and 5600K 15° or 30° or 52° Beam Angle Available



RP24-345



BP24-345

Features

Power Input	RP24-345: DC 12V 15A BP24-345: AC100-230V
Max. Power	RP24-345: 180W BP24-345: 48 W
Lifespan	50,000 hours
Temperature	-40° C to +85° C
Weight	RP24-345: 4.96kg BP24-345: 6.53kg
Dimensions	24" Diagonally 60.6*48.2*8.2cm

Specifications

Filter	2 Slots
IC	Advanced Current Control Regulator
Dimmer	0-100%
Network	Unlimited manual/remote
Remote	Infrared
	Color, Brightness, On/Off
DMX	LCD multi-situation display
Power Source	Camcorder Battery or External

24" LED Panels—Bi Beam Angle

Model Choices Flicker free, high brightness, high CRI LEDs	BP24-AS	
	3200K or 5600K	25° or 60° Beam Angle



BP24-AS

Features

Power Input	AC100-230V
Max. Power	48W
Lifespan	50,000 hours
Temperature	-40° C to +85° C
Weight	6.53kg
Dimensions	24" Diagonally 60.6*48.2*8.2cm

Specifications

Filter	2 Slots
IC	Advanced Current Control Regulator
Dimmer	0-100%
Network	Unlimited manual/remote
Remote	Infrared Color, Brightness, On/Off
DMX	LCD multi-situation display
Power Source	Camcorder Battery or External

16"and24"LED Panel Options

1. 45° Ceiling Lights

The 45° ceiling lights are mainly used in special studio or field shooting environments. Usually installed parallel to the ground, light is directed at 45° instead of perpendicular to the ground. This method greatly saves space and provides a discreet light source. Brightcast's patented LED holders guarantee a perfect 45° Beam Axis. Can use B100/200 pinch for Sony or Panasonic batteries (2–6 hours depending on battery capacity and brightness settings), or AC–DC power adapter. All the RP panels can be updated for ceiling use.



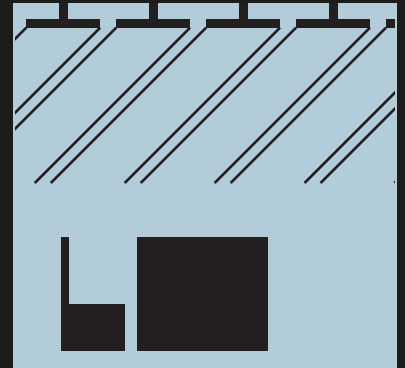
Patented 45° angle LED holder

Brightcast ceiling light products all use patented technology to ensure a perfect 45° angle and LED power protection, to further ensure the quality of lighting.



Studio Application

Ideal for in–studio and on–site filming in low roof studio.



Model Code Key: –45: applies to RP16 or RP24 LED panels

2.Royal

The Royal upgrade raises CRI to the highest possible level under current LED technology, to $CRI \geq 93$. Large organizations, such as CCTV, BBC, Al–Jazeera and NHK, Hollywood and Bollywood, national or provincial high–end users, and sophisticated production crews filming in HD and 3D, will probably need this upgrade.

Model Code Key: –U: $CRI \geq 93$

Spotlight

Brightcast's Spotlight Series uses high-brightness, high-power LEDs to develop CRI RA of 90 or above, setting new standards for the broadcasting industry.

Manual or wired control, DMX512-1990 compliant, network adjustable.

Brightcast spotlight uses in-house optical Fresnel lenses technology (HS9) and professional light cups to achieve exceptional light efficiency and brightness.

Fanless cooling design (HS9) to avoid fan malfunction and replacement.

Waterproof design (HS10, HS11) for outdoor use.

The spotlight series of products are available in 5600K, 3200K, and Bi-color.



**9"LED
Spotlight**



**10"LED
Waterproof Spotlight**



**11"LED
Waterproof Spotlight**

Spotlight-9" LED Spotlight

Model Choices Flicker free, high brightness, high CRI LEDs	HS9	HS9-345
	60 High Power LEDs 3200K or 5600K 15° or 25° or 45° or 60° Beam Angle Available	60 High Power LEDs 3200K and 5600K 15° or 25° or 45° or 60° Beam Angle Available



HS9



HS9-345

Features

Power Input	FPC AC100-230V
Max. Power	200W
Lifespan	50,000 hours
Temperature	-40° C to +85° C
Weight	9.1 kg
Lens	Convex; Fresnel Lens

Specifications

Filter	1 Slot
IC	Advanced Current Control Regulator
Dimmer	0-100%
Network	Unlimited manual/remote
Remote	Optional Infrared Color, Brightness, On/Off
DMX	LCD multi-situation display
Power Source	Camcorder Battery or External

Spotlight-10" LED Waterproof Spotlight

Model Choices Water Resistant(optional), Flicker free high brightness, high CRI LEDs	HS10	HS10-345
	36 High Power LEDs 3200K or 5600K 15° or 25° or 45° or 60° Beam Angle Available	36 High Power LEDs 3200K and 5600K 15° or 25° or 45° or 60° Beam Angle Available



HS10



HS10-345

Features

Power Input	FPC AC100–230V
Max. Power	120W
Lifespan	50,000 hours
Temperature	–40° C to +85° C
Weight	4.2kg(waterproof) 3.2kg(non–waterproof)
Ingress Protection Rating	IP67
Casing Material	Aluminum

Specifications

IC	Advanced Current Control Regulator
Dimmer	0–100%
Network	Unlimited manual/remote
DMX	LCD multi–situation display
Power Source	External
Barndoor	Optional
Lens	Convex

Spotlight–11" LED Waterproof Spotlight

Model Choices

Water Resistant(optional),Flicker free high brightness, high CRI LEDs

HS11

60 High Power LEDs
3200K or 5600K
15° or 25° or 45° or 60° Beam Angle Available

HS11–345

60 High Power LEDs
3200K and 5600K
15° or 25° or 45° or 60° Beam Angle Available



HS11



HS11–345

Features

Power Input	FPC AC100–230V
Max. Power	200W
Lifespan	50,000 hours
Temperature	–40° C to +85° C
Weight	7.2kg(waterproof) 5.2kg(non–waterproof)
Ingress Protection Rating	IP67
Casing Material	Aluminum

Specifications

IC	Advanced Current Control Regulator
Dimmer	0–100%
Network	Unlimited manual/remote
DMX	LCD multi–situation display
Power Source	External
Barndoor	Optional
Lens	Convex

Camera Lights—Lens Lights

Lens lights are indispensable close-range shooting equipment. Brightcast lens lights offer a multitude of advantages, including energy savings, high efficiency, long life and flicker-free brightness adjustment. All lights offer PWM 0–100% dimming, while variegated color temperature model RT12–345 is also available. They have been carefully designed so that users can quickly and easily replace the filter, making life for cameramen simpler. Batteries can last 2–4 hours (depending on battery capacity and brightness settings). In addition, the lights can also be supported by the camera battery or an external power adapter. Their special structural design avoids unsightly shadows, whilst solving the issue of uneven lighting.

Lens lights are currently widely used with Sony, Panasonic and JVC HDV camcorders. This series is available in 5600K, or Bi-Color Temperature.

RT/RV LED lens lights are available in multiple shapes, and can be quickly fixed onto the camera in three quick moves. Their careful design ensures that they do not interfere with internal or external microphones.

Model Choices Flicker free, high brightness, high CRI LEDs	RT12RT	RT12–345	RY12
		Oval shape with 204 LEDs 5600K 52° Beam Angles	Oval shape with 224 LEDs 3200K and 5600K 52° Beam Angles



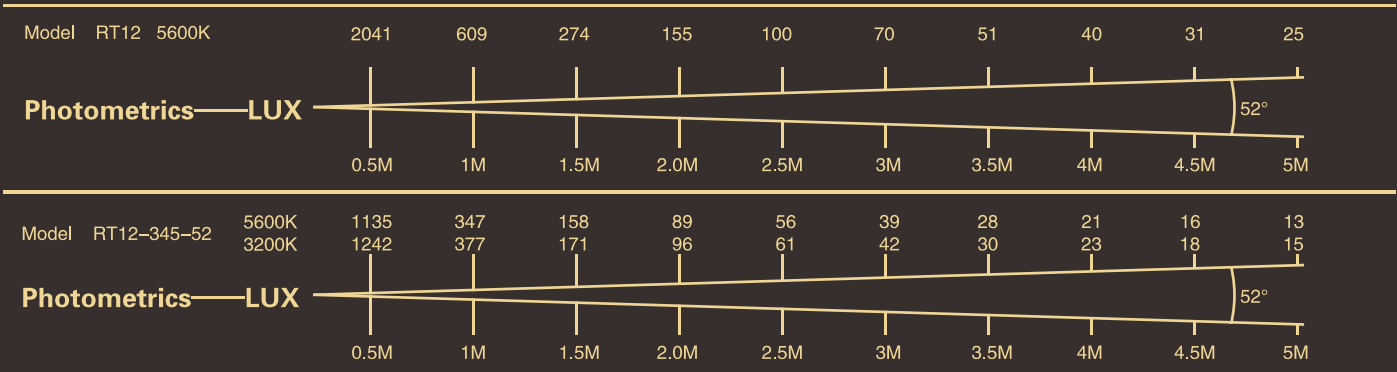
RT12

- ◇ 5600K, Bi-Color
- ◇ 204 Flicker Free, High Brightness, High CRI LEDs



RT12–345

- ◇ 3200–4200–5600K, Bi-Color
- ◇ 224 Flicker Free, High Brightness, High CRI LEDs





Our RT/RV LED series of lens ring lights were inspired by the famous Japanese photographer Mr. Hiroyuki Kawada (川田弘之先生). Experts from multiple countries, including the US, Germany and Japan were invited to participate in our R&D endeavours, in order to meet the high quality standards required by professional photographers. The RT/RV series uses a removable lithium battery and can work with a variety of mainstream video cameras, to meet multi-angle, multi-situational needs. This series of lights is the perfect partner for professionals around the world working in HDV environments.



RY12

- ◇ 5600K
- ◇ 204 Flicker Free, High Brightness, High CRI LEDs

Features

Power Input	12V 2A
Max. Power	RT12: 15W RT12-345:16W RY12:15W
Lifespan	50,000 hours
Temperature	-40° C to +85° C
Weight	RT12:0.47kg RT12-345:0.49kg RY12:0.47kg
Dimensions	RT12/RT12-345: 12"(26.8*18.7*7.8cm) RY12: 12"(23.8*21.4*4.5cm)

Specifications

Filter	1 Slots
IC	Advanced Current Control Regulator
Dimmer	0-100%
Network	Unlimited manual/remote
Remote	Infrared Color, Brightness, On/Off
Power Source	Camcorder Battery or External

Camera Lights—On—Camera Lights

On—Camera lights are indispensable close—range shooting equipment. Brightcast on—camera lights offer a multitude of advantages, including energy savings, high efficiency, long life and flicker—free brightness adjustment. All lights offer PWM 0—100% dimming. Rapid filter replacement design. Can use Sony and Panasonic DV cameras batteries.

Model Choices	RC7	RC5	BC5
Flicker free, high brightness, high CRI LEDs	140 LEDs 5600K 30° or 52° Beam Angles	80 LEDs 5600K 15° or 30° or 52° Beam Angles	10 High Power LEDs 5600K 120° (without lens) 40° (with lens)



RC7

- ◇ 5600K
- ◇ 140 Flicker Free, High Brightness, High CRI LEDs



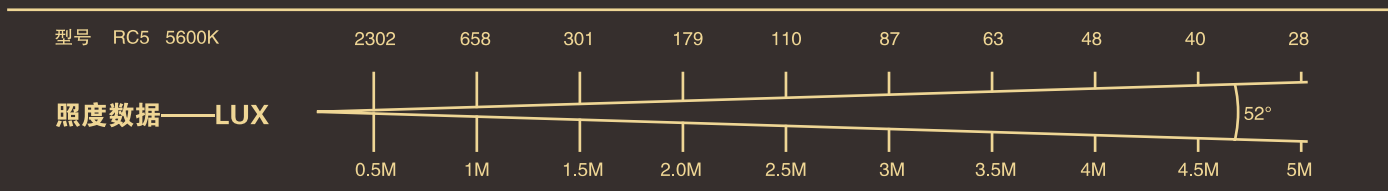
RC5

- ◇ 5600K
- ◇ 80 Flicker Free, High Brightness, High CRI LEDs



BC5

- ◇ 5600K
- ◇ 10 Flicker Free, High Brightness, High CRI LEDs



Features

Power Input	RC7: 12V 2A RC5: 12V 1A BC5: 12V 2A
Max. Power	RC7: 12W RC5: 8W BC5: 30W
Lifespan	50,000 hours
Temperature	-40° C to +85° C
Weight	RC7: 0.59kg RC5: 0.29kg BC5: 0.59kg
Dimensions	RC7: 7" (20.2*9.7*6.2cm) RC5: 5" (11.3*6.5*11.2cm) BC5: 5" (11.3*6.5*11.2 cm)

Specifications

Filter	2 Slots
IC	Advanced Current Control Regulator
Dimmer	0-100%
Network	Unlimited manual/remote
Remote	Infrared Color, Brightness, On/Off
Power Source	Camcorder Battery or External

Brightcast Storm Series

LED Storm

Brightcast's Storm series of LED lights includes the most popular Single Color, Bi-Color and Multi-Beam Angle lights, and are available in 16" and 24". Providing the most important functionalities, these lights have been designed to broaden the appeal of LEDs in the broadcasting industry and provide the best value for money. Regardless whether you have a big studio or are starting off, these lights are a good place to start. Functionalities include seamless dimming of 0-255 levels (manual or via remote), and lights can be connected via DMX protocols to form a network of unlimited size.

Model Choices

Storm 16-32 : single color temperature 3200K; 15° or 30° or 52° beam angle;

Storm 16-56 : single color temperature 5600K; 15° or 30° or 52° beam angle;

Storm 16-345: 3200K ~ 5600K adjustable color temperature; 15° or 30° or 52° beam angle;

Storm 16-32-AS: single color temperature 3200K; 15° /30° or 15° /52° or 30° /52° adjustable beam angle

Storm 16-56-AS: single color temperature 5600K; 15° /30° or 15° /52° or 30° /52° adjustable beam angle

Storm 24-32: single color temperature 3200K; 15° or 30° or 52° beam angle;

Storm 24-56: single color temperature 5600K; 15° or 30° or 52° beam angle;

Accessories



Power Adapter-16"



Power Adapter-24"



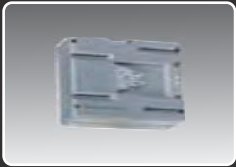
Panasonic Battery Pinch Plate



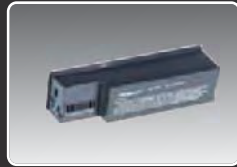
Sony Battery Pinch Plate



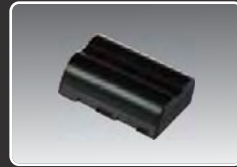
Panasonic Camera Battery



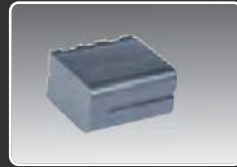
Sony Camera Battery



RT12 Battery



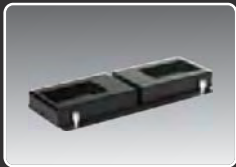
RY12 Battery



RC5 Panasonic Battery



RC5 Sony Battery



RC7 Panasonic Battery Pinch Plate



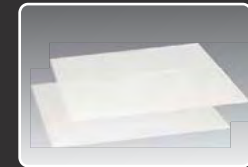
RC7 Sony Battery Pinch Plate



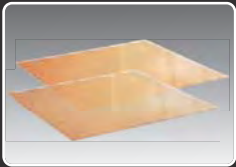
DMX Connector



Transparent Filter



Soft Filter



Tungsten Filter



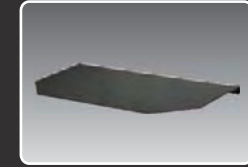
RT12 Soft Filter



Tungsten Filter



Soft Transportation Case



Bamdoor



Spotlight Bamdoors



Tripod

 **Brightcast**

Copyright © 2010 Brightcast Rights Reserved

www.Brightcast-led.com

Brightcast reserves the right to make changes to the products contained in this publication in order to improve design, performance or reliability. Information contained herein reflects representative operating parameters, and may vary depending upon a user's specific application.