

Reporter 300H

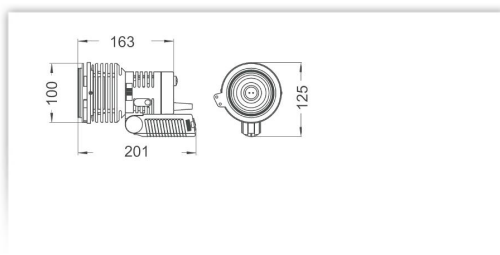
Mains-operated luminaire with handle including integrated camera mount



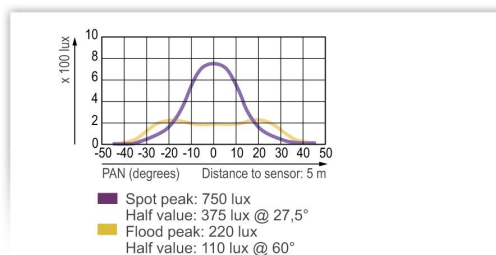
The Reporter 300H, which is barely larger than the R100H, is ideal for on-camera, hand-held or on-stand use. A complete set includes three luminaires, corresponding stands, diffusers and filters for scene or interview illumination. Need to change a bulb? You can rely on outstanding light distribution, even if you insert 200 W or 150 W bulbs into your Reporter 300H.

Technical Facts

Power	300 W
Bulb Type	Philips VL 300, VL 150
Bulb socket	GX 6.35; 30 mm (1.2 in)
Weight	0.65 kg (1.4 lbs)
Weight 4-leaf barndoor	0.15 kg (0.3 lbs)
Focusing ratio	1:3.5
Cable length	4 m / 13.1 ft
Mount Type	1/4" - threaded screw incl. shoe for camera mount
Dimensions (L X W x H)	201 x 100 x 125 mm / 7.9 x 3.9 x 4.9 in



Dimensions



Flood & Spot

Further photos



Order data

Article	Order code
Reporter 300H Mains-operated luminaire with handle including integrated camera mount	R3xxH

This product is also available in the following systems:

Article

Set 300H

Order code

S3xxH

Accessories



Socket 16/1



Mounting shoe



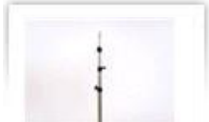
Vario clamp



Double-ended
spigot 16/1



Stand L1



Stand L1C



Betacam
mounting shoe



Sky Hook



Betacam low
profile mount



Low profile
mount

set your ideas in motion!