

MODEL NO. : LM-1054HD Monitor

SPECIFICATIONS

◆ DISPLAY SCREEN

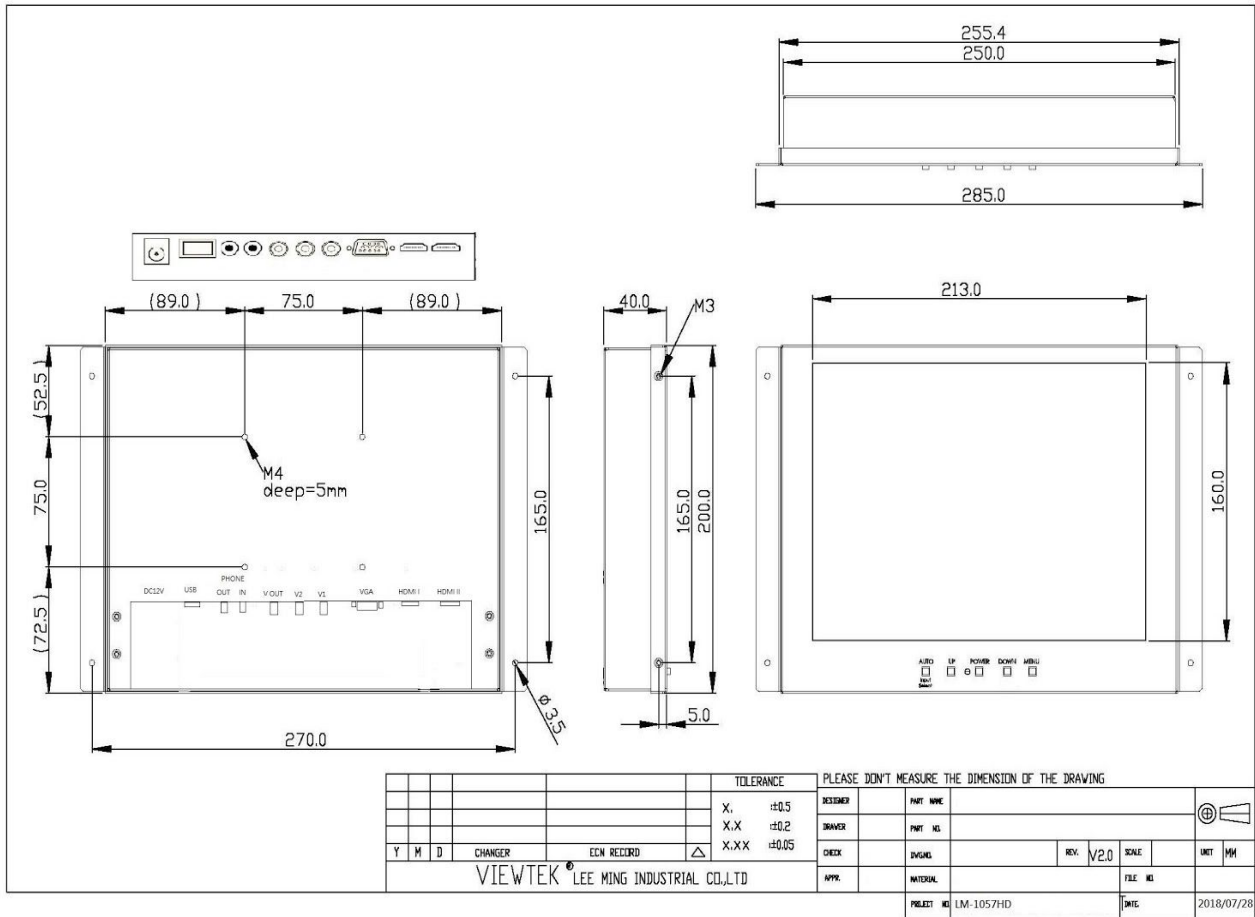
SIZE	10.4 INCH
ACTIVE AREA	210.4(W)x 157.8(H)mm
ELEMENT	COLOR TFT LCD
RESOLUTION	1024 x 3RGB x 768
PIXEL PITCH	0.2055 (W) x 0.2055 (H)mm

◆POWER SOURCE	DC 12V
◆POWER CONSUMPTION	10W Typ.
◆OPERATING TEMPERATURE	-20°C ~ 70°C
◆STORAGE TEMPERATURE	-20°C ~ 70°C
◆BRIGHTNESS	230 CD/m ²
◆CONTRAST	500 : 1
◆RISE TIME / FALL TIME	10/20 msTyp.
◆VIEWING ANGLE	Vertical +60°/-70°, Horizontal : ±80°
◆PC INPUT	RGB Input 15 Pin D-sub x 1
◆VIDEO INPUT	RCA x2, 1.0 VP-P 75Ω ,
◆HDMI INPUT	HDMI x 2
◆USB INPUT	USB x 1
◆DVI INPUT	DVI x1 (Optional)
◆OSD CONTROLN	Volume , Brightness , Contrast, Sharpness , Color
◆PLUG & PLAY	VESA DDC2B
◆GREEN FUNCTION	VESA DPMS
◆OSD CONTROL FUNCTION	Brightness, Contrast, Color, Volume, Mute
◆DIMENSION (W x H x D)	285.0 x 165.0 x 39.0 mm
◆WEIGHT	1400 ± 10 g

FEATURES

1. Heavy Duty 10.4" LCD
2. RCA Video x 2 Input, (BNC Optional)
3. VGA 15Pin D-sub x1 Input
4. HDMI x 2 Inputs
5. USB x1 input
6. U/D/L/R Reverse Image Function with Remote (Optional)
7. DVI Input (Optional)
8. Touch Screen (Optional)
9. High Brightness (Optional)

MECHANICAL DRAWING



VGA SUPPORT TABLE

Resolution	Horiz. Freq.(KHz)	Vert. Freq.(Hz)	Polarity
640X350	31.46	70	+/-
	37.86	85	+/-
720X350	31.46	70	+/-
	37.86	85	+/-
640X400	31.46	70	-/+
	37.93	85	-/+
	24.82	56	-/+
720X400	31.46	70	-/+
	37.86	85	-/+
640X480	31.46	59.9	-/-
	35.00	66.6	+/-
	37.86	72.8	-/-
	37.50	75.0	-/-
	43.27	85.0	-/-
800X600	35.15	56.2	+/+
	37.87	60.3	+/+
	48.07	72.2	+/+
	46.87	75.0	+/+
	44.40	70.0	+/+
	53.67	85.0	+/+
832X624	49.72	74.5	-/-
1024X768	48.36	60.0	-/-
	56.47	70.1	-/-
	58.08	72.9	
	60.02	75.0	+/+
	68.68	84.9	+/+
1152X864	54.90	60.0	
	64.19	70.2	+/+
	67.50	75.0	-/-
	76.30	80.0	
	77.09	84.9	
1280X1024	64.60	59.9	+/+
	63.98	60.0	-/-
	74.40	59.3	
	78.72	74.0	
	79.97	75.0	